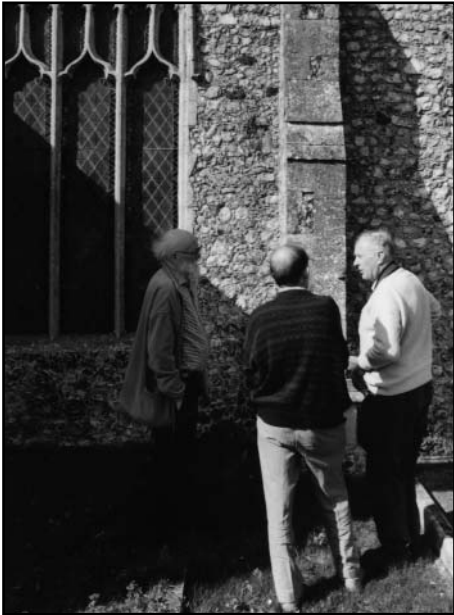




BAHS Newsletter

Number 23

July 2007



(above) The three Johns discuss the finer points of buttressing.

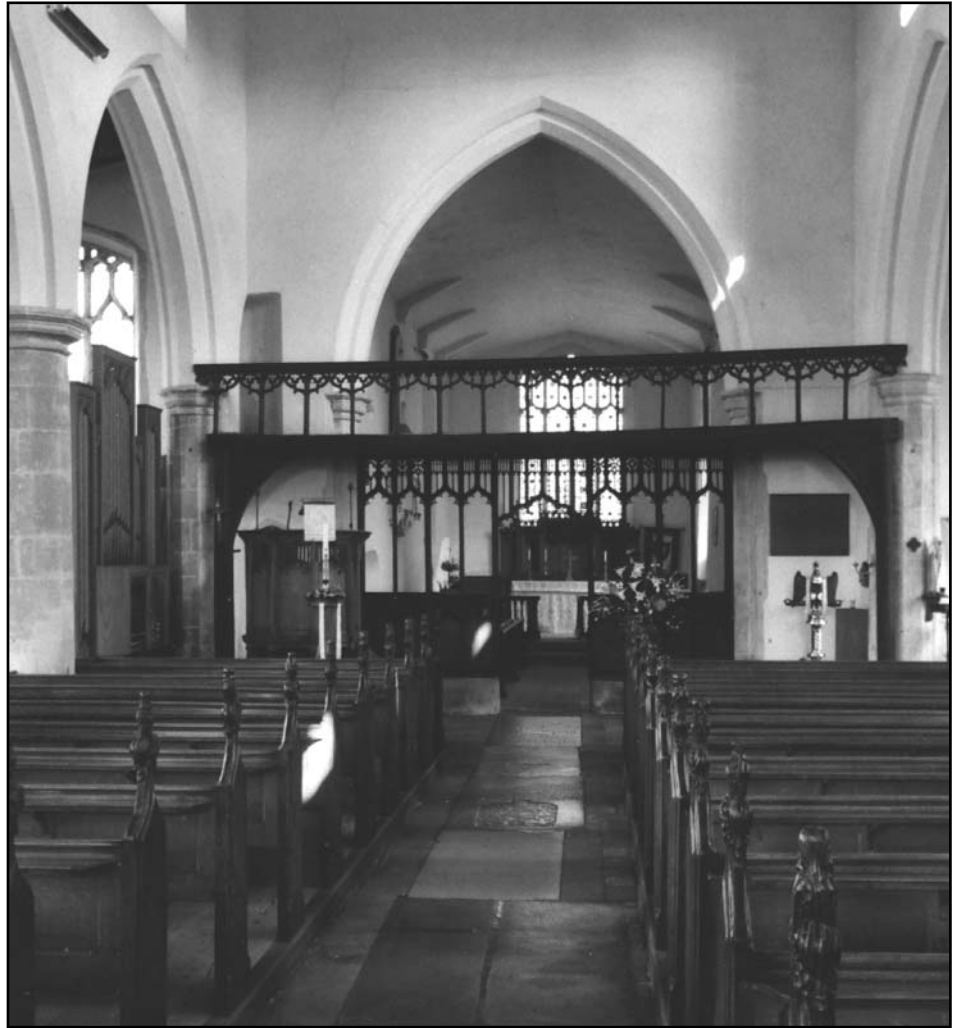
(right) Interior of Upper Sheringham church showing inter alia the fine rood screen.

BAHS goes to Church

There is a distinctly ecclesiastical air to this edition of the Newsletter. This is purely by chance and is in no way connected to the recent influx of clerical gentlemen onto our committees. Honest.

These two photos were taken during a visit to Upper Sheringham church led by the Rev Dr Tim Fawcett in the course of which he took us through 1500 years or so of church architecture and pointed out how this had affected the church we were in.

Tim had started out by saying that churches are used for worship – the actual building is unimportant. But very handsome.



Subscription Renewals

for membership year July 2007 - June 2008

Name:

Address:

£10 individual/£14 family/£25 corporate
(delete as appropriate)

Remittances should be sent to the Mem Sec
Anne Maw, 2, Wiveton Road, Blakeney, NR25 7NJ

News from the History Centre

It is five years since the Society opened the door to the History Centre – a purpose built library and research room for members and interested visitors.

During that time the Centre has provided support for members undertaking personal research, supported UEA partnership courses, run workshops, organized projects and outings and led tours on request.

Meanwhile the resources have steadily increased, both by purchase and gifts from individuals.

Don't miss the opportunity for a viewing on Open Day when the Centre will have on show the very latest accessions and an exhibition in the adjacent Scout Hut. There will also be a sale of duplicate and excess books.

Spotlight on Cley

The Trustees of the Knott Will Trust have made available a wide range of documents relating to Cley for us to copy for our records. They mostly concern Cley Hall Estate from the early 1840s and cover a range of interests; the old and new Halls, Board School, road verges, allotments, churchyard extensions, council house land, sale of wild fowling marshes in 1926 and then farms, cottages and land (many with accompanying maps), biographies and Wills of the Cozens-Hardy family, Cley brasses and so on.

In addition we have a copy of an Abstract of Title to property in the Fairstead. This was clearly once copyhold of Cley Manor and the early house history could be covered by the summaries prepared by Basil Cozens-Hardy and available in the Kenneth Allen Papers. Wonderful news for house history detectives.

Finally there is Gerald Randall's CD covering the Medieval Building History of St Margaret's church. Gerald has researched this aspect of the church history with a passion and these are his current thoughts and conclusions.

The CD covers early architectural detail, the likely sequence of the enlarging, the masons, patrons and their families together with other significant people who are portrayed by the shields in the south porch. The illustrations, photographs, plans, architectural drawings and family trees fully compliment this endeavor.

Purchase your copy direct from the History Centre for £5.00 as all proceeds are divided equally between the Centre and the newly formed Friends of Cley Church.

Accessions

Recent additions to the library are a number of CDs that cover directories and poll book information from 1768 to 1925 for the following; Bale, Bayfield, Blakeney, Cley, Langham, Morston, Wells and Wiveton. They make an essential starting point for village history in the recent past especially when used with census returns.

Books range from Poverty and Vagrancy in Tudor England to Black Faces, A History of East Anglian Sheep Breeds and then The Troublesome Priest, Harold Davidson Rector of Stiffkey, to name but a few. Some were purchased, others were donated to the Centre.

We now have a print out of 1861 Census returns for Glaven-born mariners who were at sea that night. If you have lost a mariner on the night of April 7th, 1861 this may well provide you with the answer.

Roots and Branches

Visitors calling at the Centre researching their ancestors included descendants of Cotterill, Pinchen, Ramm, Allen, Mallett, Able, Starling, Cubitt, Browne, Skivens, Turner, Forsdick and Drozier families. Some wish to make contact with distant cousins who may be living in the area today. Ask for more information at the Centre.

Remember, if you want to

research your family, need some help or guidance then visit the Centre on the first Monday afternoon of the month from Oct to Dec. You will find information that is simply not available on the internet as well as copies of all the local parish registers, so necessary for tracing your family before censuses began.

Meanwhile the Thompson family history continues apace and the results to date, go on show in the Scout Hut on Open Day. There are well over 1,000 people descended from the marriage of John Thompson and Sarah Ramm. Connections by subsequent marriage link these descendants to Starlings, Cubitts, Adcocks, Parsons and Curry Smiths of Blakeney and through the Ramms to Bretts and Bishops of Cley.

The Thompson/Ramm exhibit is well supported by photographs from around the world, stories, wills, inquests, South Shields family, River Tyne Police, copies of mariner's tickets, indentures and sailing stories, obituaries etc.

The Langham Walk

Mike Medlar is well known to the Society having both talked to us and written on Langham in recent issues of the Glaven Historian. With such a wealth of knowledge on the area this will be a golden opportunity to walk the village with him. Witness at first hand the evolution and development of the landscape and housing stock. Prepare yourself by comparing the present layout with the description of 1822. This will be on view at the exhibition in the Scout Hut where you will be able to book your place on the tour.

Pamela Peake

Editor: Richard Kelham
phone/fax: 01263 740186
e-mail:
richard_kelham@yahoo.co.uk

All text © 2007
BAHS and Contributors

Course: Advance Notice

Glories of the Glaven

Three Glaven churches: Cley, Wiveton and Blakeney
Tutor: Gerald Randall

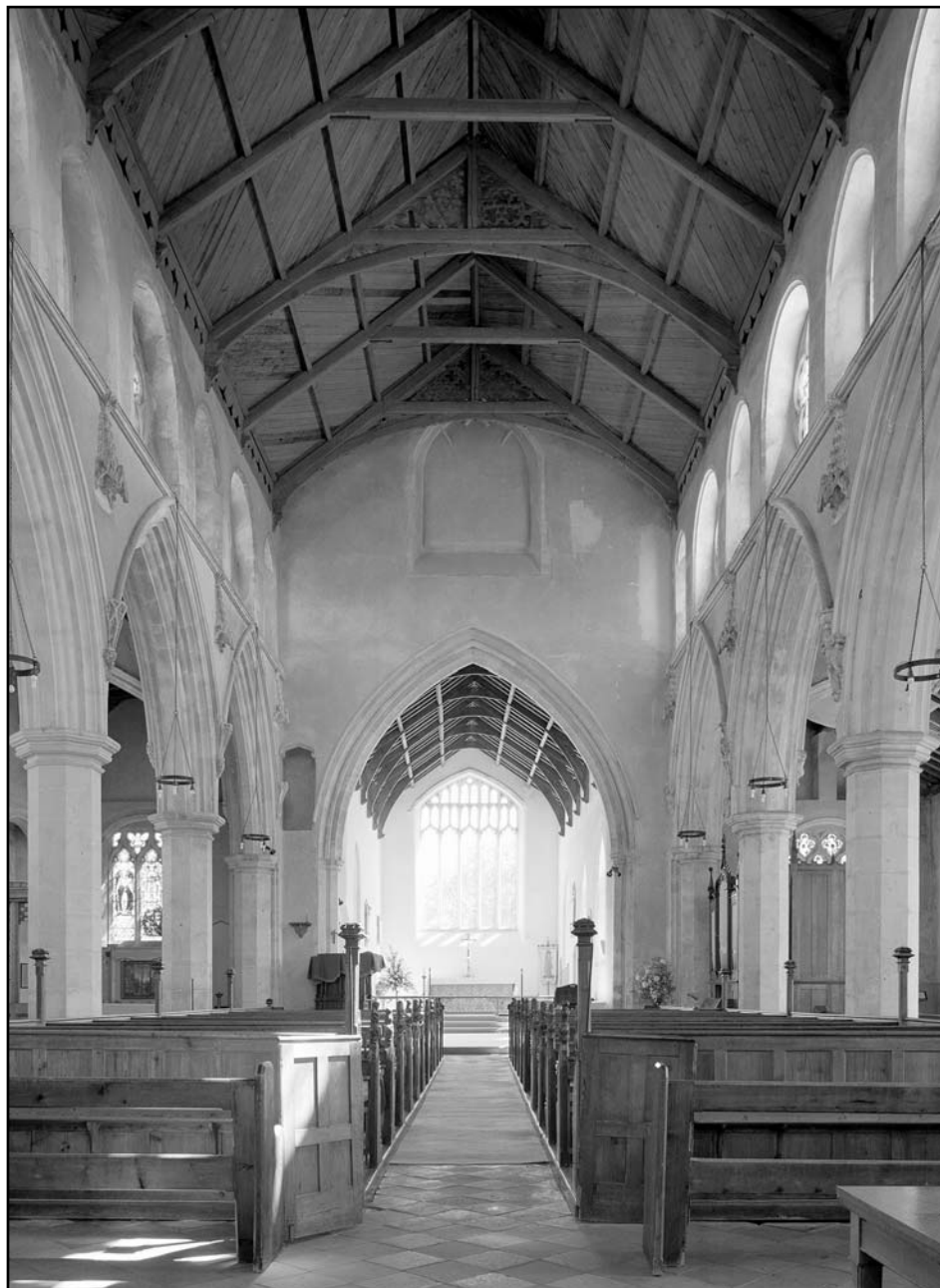
Course: 6 weeks on a Wednesday morning
10.45am -12.15pm
starting 26th September

Cost: £50 members
£55 non-members

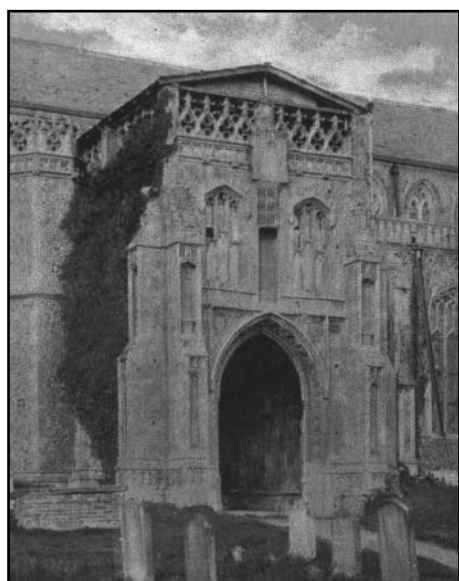
Note: number of participants is limited to 16

The course will be an in-depth study of three churches. There will be a common pattern: first a lecture that will highlight the architectural features, and compare and contrast these with other churches, both within the vicinity and across the country; this will be followed by a 'field-work' morning in the appropriate church seeing and discussing the actual features with Gerald Randall.

Book your place by giving your name to Frank Hawes (01263 740981) together with a £5 deposit.



Cley church interior on a sunny morning in 2007 – yes really.



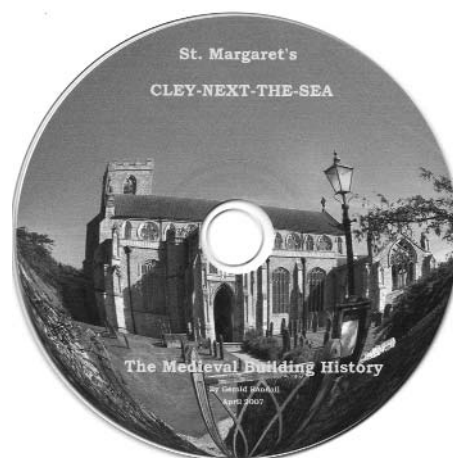
From a postcard of c1907, the south porch at Cley church with what is assumed to be a temporary roof to permit repairs to the real one.

Cley Church CD-Rom

The architecture of this wonderful church has been a passion of the author for many years and he has drawn on his knowledge of churches throughout Europe to produce this scholarly and detailed account of St Margaret's. It discusses not only architectural features and the underlying geometry, but also the historical context including the families involved and the subsequent enlargement of the building.

The CD is prepared in MS Word and includes some 53 pages of text, drawings and plans plus photographs.

It is a must for anybody interested in the early history of the



Church and the area.

The cost? £5, available from The History Centre. Profits will go to the Friends of Cley Church and The History Centre.

Summer/Autumn Programme 2007

Events

All the meetings listed below commence at 7.30 pm in the Harbour Room, British Legion Hall in the High Street, Blakeney, doors open 7.00 pm.

Entrance: £2 for members and £3 for visitors, including refreshments

- Tuesday
September 25 **Agriculture in North Norfolk revisited:** a view of a changing scene through photographs; a return visit with some new material.
Philip West
A short AGM will precede this meeting.
- Tuesday
October 30 **Admiral Cloudsley Shovell – a local man:** remembering the tercentenary of the tragic death in the Scilly Isles of one of Norfolk's great admirals, from Cockthorpe
Simon Harris
- Tuesday
November 27 **The Rise of Holiday Architecture - Cromer:** the 19th and early 20th century saw the development of the seaside holiday and the need for accommodation.
Andy Boyce
- Tuesday
December 11th **Christmas Mardle:** a mixture of exhibits about local villages and families, seasonal festivities and a short talk by Godfrey Sayers. Come and join us.
- 2008**
Tuesday
January 29 **Members' Night:** four short talks by members.
-

History Centre Diary

2007

- Thursday
August 23 **History Centre: Open Day and Local History Exhibition** 10.00am - 4.00pm.
History Centre, Blakeney (behind Village Hall) and Scout Hut.
- Saturday
September 29 **Exploring Langham on Foot: for 2+hrs, meet 10.00am.**
Leader: Mike Medlar Cost £4.00
Numbers limited, booking on 01263 740388 is essential.
- Mondays
October 1
November 5
December 3 **Members afternoon, History Centre: 2.00 - 4.00pm**
An opportunity to use the facilities of the History Centre for your own research, whether it be your family, house or a local village. You could read some of the books on the area in the library.
-

Course

- Wednesdays
September 26 **Glories of the Glaven:** start of 6 wks course on the 3 Glaven Churches of Cley, Wiveton and Blakeney. 10.45am - 12.15pm.
Tutor: Gerald Randall.
For more information and to book your place contact Frank Hawes on 01263 740981

For more information and a regular update on BAHS activities visit our website at www.history-blakeney-area.org.uk