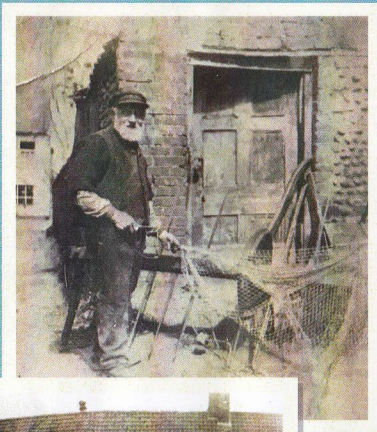


Once a flourishing port

In the Middle Ages the village of Cley and its harbour were centred around the imposing church standing on higher ground. Ships from the port traded far afield: to Iceland, the continent and London. In the 1630s a bank built across the tidal estuary caused dramatic silting up of the channel upstream almost overnight. The harbour moved north to the site of the present quay; the village as we know it grew up nearby, and sea going trading continued to flourish through the 18th century but declined during the 19th century and was no more by 1900.

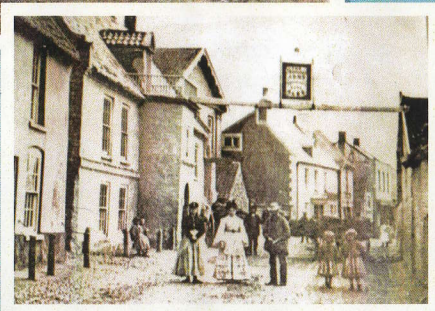
Howard Brett (1840-1941) is seen mending his fishing nets. Behind his right shoulder is Howe's Yard, known locally long ago as Rattle Alley Highway.



The George (Map No. 15) seen before the addition of its Edwardian style facade.



The Fishmonger's Arms (Map No. 17) was one of many older pubs that closed after Cley's sea trade declined.



Now a thriving village and renowned bird reserve

After the decline of the port, Cley continued as an agricultural and fishing backwater. Serious tourism started from the middle of the 20th century as the bird reserve, of national renown, brought in more and more visitors to the area. In the 21st century many of the commercial buildings associated with the ancient sea trade have been given a new lease of life as shops, eateries and residences.



Heritage walk information

The Heritage Walk follows mostly level roads and surfaced footways making the majority of the walk fully accessible. Restrictions apply at Point 3 where the route follows a narrow-surfaced level footpath which is uneven in places. Between points 9 – 16 the route follows a narrow unsurfaced path which contains steps, an alternative route is available along the road between point 4 and point 17.

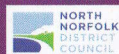
The route follows a steep path to the Church, which is shown on point 30 of the map, the path is partly stone and then a grass surface. It is possible to follow the road round in front of the Church to Church Lane to bypass this section of the walk.

Cley has narrow streets with no footways in the centre of the village, therefore in places, pedestrians share the road with vehicles, please stay safe and be aware of any oncoming traffic.

The walk starts in the Village Hall Car Park where you can park for free, there is a public toilet in the car park which is open 9am – 5pm every day. A small play park and playing field is also located here.



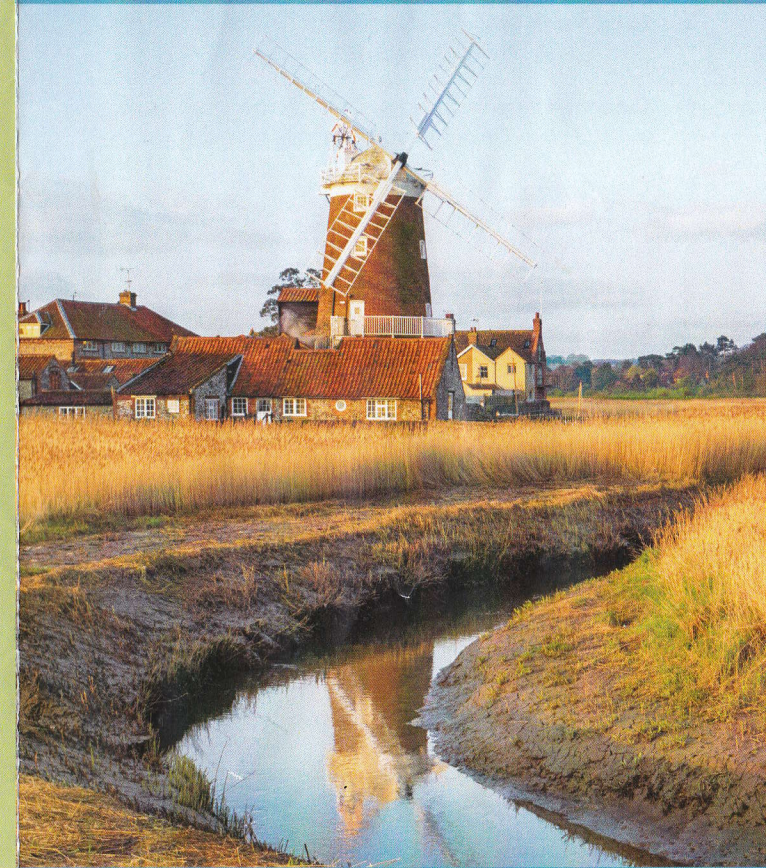
Supported By The



Arts & Culture Fund



Cley Heritage Walk



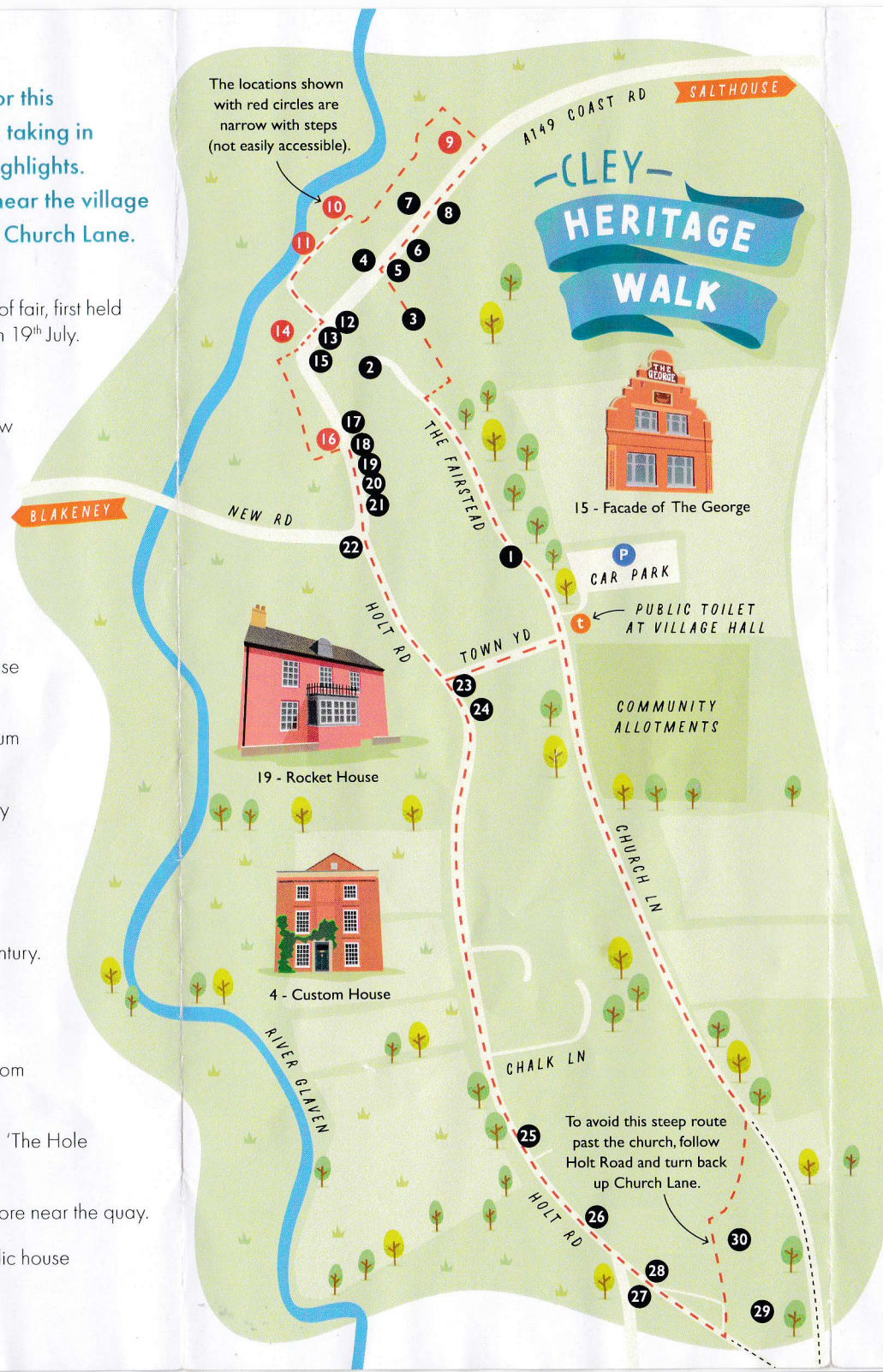
Find more information on the Heritage Walk, including photos and facts, online at the Cley Parish Council website www.cleypc.info





Allow an hour for this fascinating walk taking in Cley's historic highlights. The walk starts near the village hall car park on Church Lane.

1. **The Fairstead** (Fair Stead) – medieval site of fair, first held in 1253 to honour St Margaret of Antioch on 19th July.
2. **Cley School** Built 1859/60. Closed 1982.
3. **Long Stone Loke** 'loke' defined as a narrow path. Here with high walls on either side.
4. **Custom House** Built about 1680. Closed in 1853 when the office moved to Wells.
5. **Cley Garage** Site of the garage here from before 1939 until closure in the early 1990s.
6. **King's Head** (now *The Harnser*) Public house closed in 1970.
7. **Zetland House** T.B. (tuberculosis) sanatorium in the 1914-18 war.
8. **Mariner's Hard** Home and studio of Henry Nash Pashley (1843-1925) – taxidermist.
9. **Salt Pans** Salt extracted here a thousand years ago.
10. **Cley Mill** Corn mill built in the early 19th century.
11. **Cley Quay** The quay for Cley harbour has been here since the early 17th century
12. **The Old Arch** Probably made with stone from the medieval chapel on Blakeney Eye.
13. **Queen Victoria** (beer house). Nicknamed 'The Hole in the Wall'. Closed 1903.
14. **Beau Rivage** Formerly a barn and grain store near the quay.
15. **The George** (George and Dragon) A public house here since the 1660s.



16. **Town Hall** Built in 1896 as the village hall. Closed in the 1970s when the new hall was built.
17. **Fishmonger's Arms** Public House from the early 18th century. Closed in 1959.
18. **Weslyan Methodist Chapel** Built in 1839, and closed before 1952.
19. **Rocket House** From the middle 19th century the headquarters of the Cley Rocket Company.
20. **Whalebone House** No whale bones, but fine flint patterns and animal bones on the street wall.
21. **Starr's Shop** (Commerce House) (now *Made in Cley*). General stores from 19thC to the 1980s.
22. **The Old Forge** Destroyed by the 1953 flood. (now *Picnic Fayre*).
23. **Paupers' Lodgings** In the 18th century housing eight men and eight women.
24. **Station Master's House** Possible site of his house if the railway had come through Cley.
25. **1953 Flood Level** Look out for 1953 F L in brick in the roadside wall.
26. **1676 Garden Wall** The date 1676 can be seen high up in brick in the roadside wall
27. **Newgate Green** named after Christopher Newgate, a 16th century Cley farmer.
28. **Three Swallows** Public House first mentioned in 1789.
29. **Garden of Rest** Donated to Cley Church by the Sumpter family in 1932.
30. **St Margaret's Church** St Margaret of Antioch is the patron saint. The church dates to the early 14th Century.

30 - Cley's impressive church

